



SADC-CLIMATE SERVICES CENTRE INTENSE TROPICAL CYCLONE FREDDY

ISSUE NUMBER: 2 OF 2022/23

RELEASE DATE:

16/02/2023

RAINFALL SEASON: 2022/23

HIGHLIGHTS

1. Intense tropical cyclone Freddy is evolving in the mid-Indian Ocean and continues to track westwards
2. On this trajectory the system is approaching the Mascarenes and Madagascar. It may influence weather over Rodrigues and over Mauritius early next week with heavy rains. There is high risk that the cyclone might impact Madagascar by mid next week.
3. Heavy to extreme rainfall associated with other weather system will be felt over some parts of Botswana, Zambia, Zimbabwe, Eswatini, northern South Africa, central Mozambique and Madagascar with risk of flooding

Analysis of model outputs from the following sources: European Centre for Medium-Range Weather Forecasting (ECMWF), Joint Typhoon Warning Centre (JTWC), Regional Specialized Meteorological Centre (RSMC) La Reunion and the SADC Climate Services Centre WRF-GFS, show there is fairly good agreement among most models that intense tropical cyclone Freddy will maintain the westerly to west-south-westerly track and approach the Mascarene islands by 20 February 2023.

WARNING ZONE

Intense tropical cyclone Freddy is evolving over the mid-Indian ocean and it currently moving in a westerly track at 25 km/h.

On this trajectory Freddy is approaching the Mascarenes and clouds associated with it may cause heavy rains over Rodrigues by the end of the week-end and over Mauritius early next week.

With the approach of cyclone Freddy, conditions will become very unstable over Madagascar causing heavy to torrential rains.

A low pressure area is currently present over northern Botswana and causing heavy rains. This low pressure is not expected to deepen, however heavy rains with high risk of local flooding will be favoured over some parts of Botswana, Zambia, Zimbabwe, Mozambique, Eswatini, northern South Africa and central Mozambique in the coming days.

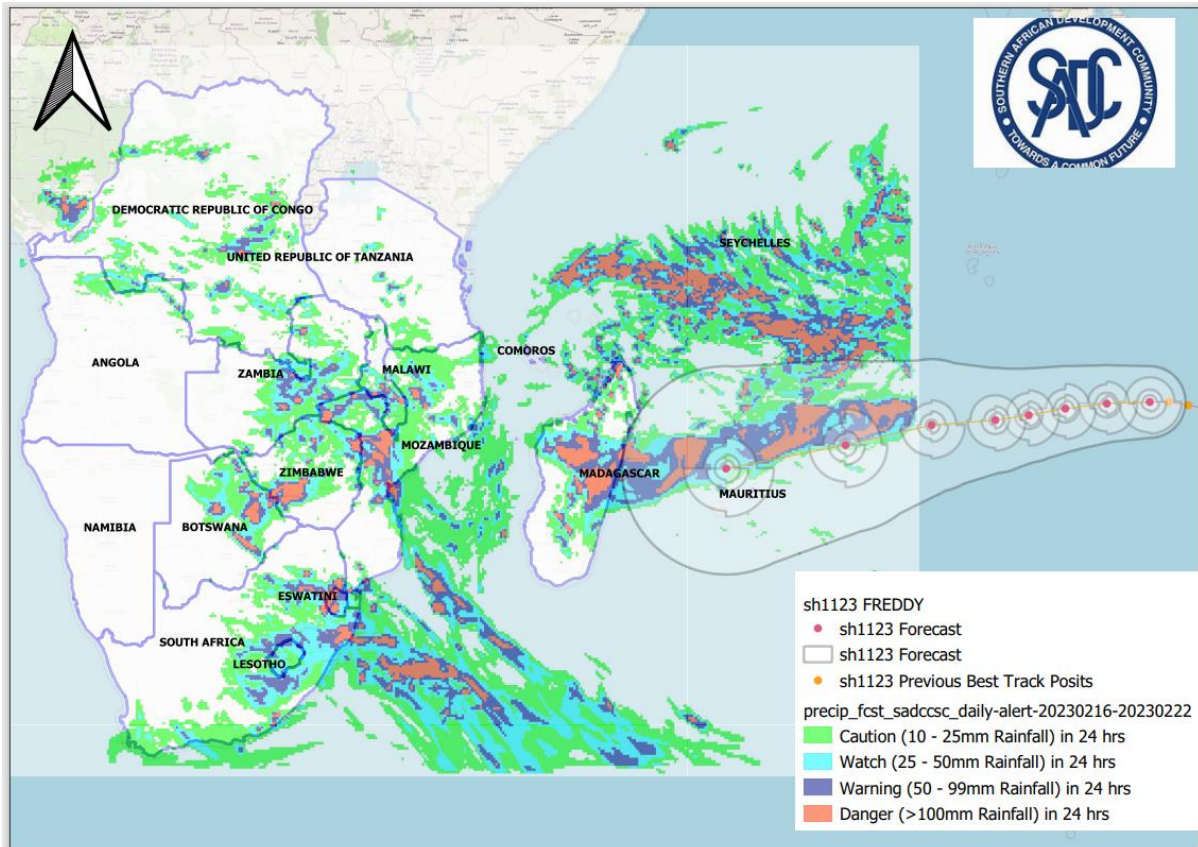


Figure 1: Heavy rainfall expected over the SADC region due to Freddy and other weather systems during the period of 16 to 20 February 2022 (Source: SADC-CSC WRF-GFS Model and JTWC (tracks))

RECOMMENDED ACTION

National Meteorological and Hydrological Services are requested to closely monitor these events and update relevant institutions such as Disaster Risk Management Agencies at Member States level to support preparedness and response measures to protect lives and property.

Users are encouraged to consult National Meteorological and Hydrological Services in Member States for Further information.

NEXT ADVICE

The next advisory will be issued when there is need to update information on the current evolving tropical system over the Indian Ocean, which will have a direct impact on the SADC Region.

For more information contact:

SADC Climate Services Centre (SADC-CSC)
Private Bag 0095, Gaborone, Botswana
Email: csc1@sadc.int
Website: csc.sadc.int